

HORIZON COLLECTION

CARPET
PLANKS

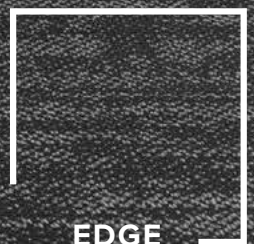
AIRLAY 

HORIZON COLLECTION

Horizon showcases the theoretical line that separates the planet from the sky. The elegant design using subtle textural lines will suit modern and classic interiors alike.

This flooring is cleverly engineered for heavy commercial areas and is manufactured using colourfast stainproof solution-dyed nylon.







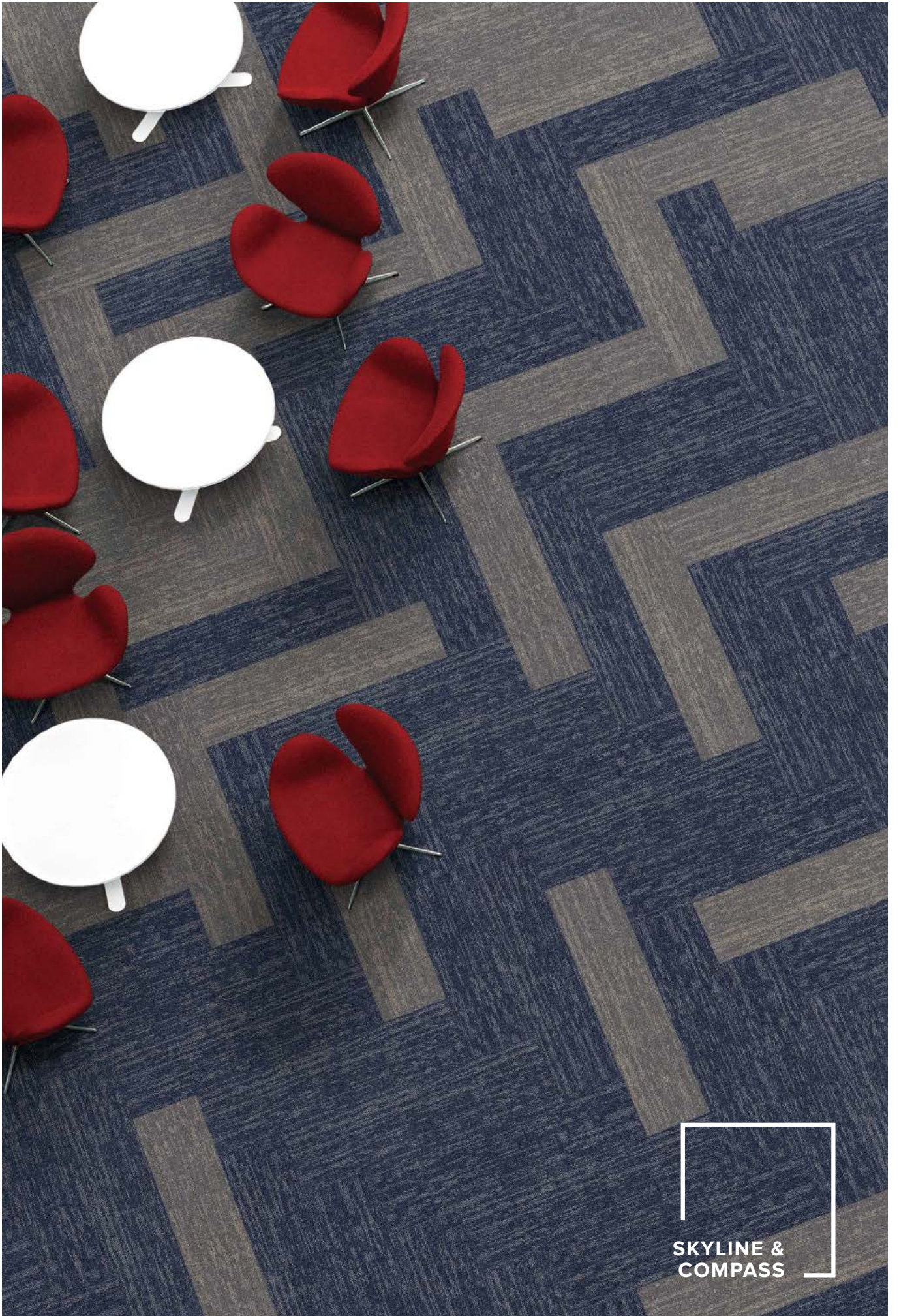


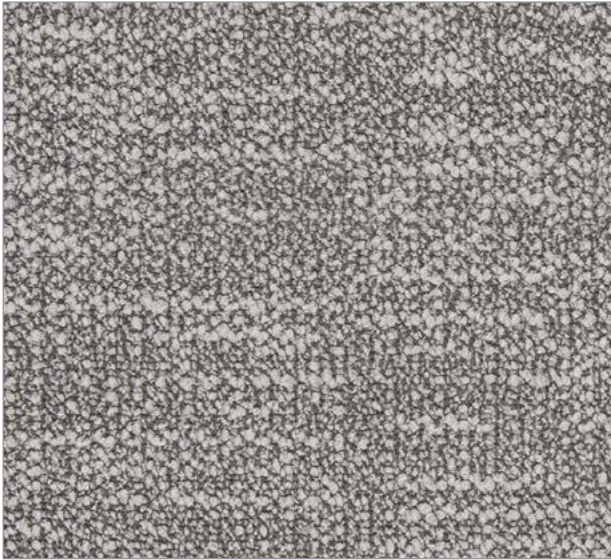




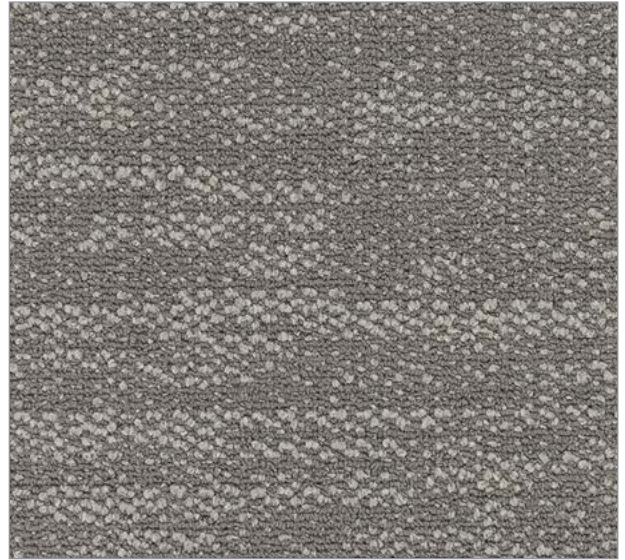


COMPASS,
LATITUDE
& EDGE





LATITUDE



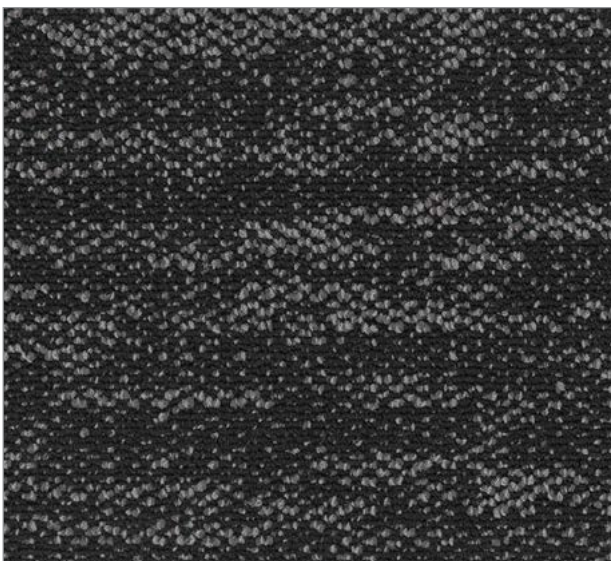
VIEW



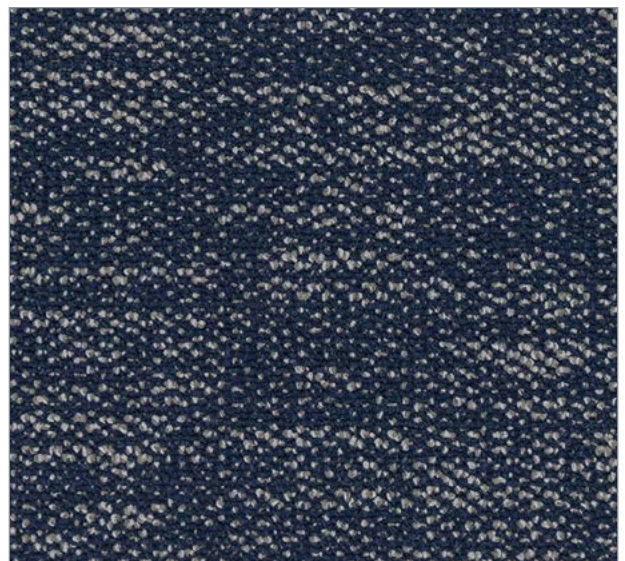
COMPASS



BOUNDARY



EDGE



SKYLINE



HORIZON



Edge



Latitude



Skyline

TECHNICAL SPECIFICATIONS

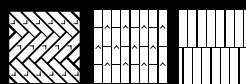
Product Range	Horizon
Product Description	Patterned Loop Pile Carpet Plank
Yarn / Fibre	100% Solution Dyed Nylon
Machine Gauge	1/12th
Pile Height	4.0mm +/-0.5mm
Total Thickness	6.0mm +/-0.5mm
Tile Size	25cm x 100cm
Backing Structure	PVC with Recycled Content
Installation Method	Herringbone, Ashlar, Brick

SUSTAINABILITY SPECIFICATIONS

Less Waste	Modular carpet creates 85 – 90% less waste than broadloom carpet
Product Stewardship	100% take back & repurpose through accredited partner
Recycled Content	Minimum of 55% recycled content in the backing structure Average of 40% recycled content by weight of product
Accreditation	Carpet Institute of Australia ECS4 Carpet & Rug Institute Green Plus (CRI Green Plus) EU CE Accreditation ISO14001:2004 Environment Certification System ISO9001:2008 Quality System Certificate

PERFORMANCE SPECIFICATIONS

Area of Use	Commercial
Dimensional Stability	Less than 0.2% variation
Biocontaminant Control	Ultra Fresh Anti-microbial treated
Anti-Static	AATCC134 < 3500 Volts
Warranty	To be installed according to Australian Standards AS/NZS 2455:1:2007 and AS/NZS 2455.2:2007. 15 year limited warranty: • Manufacturing defect • Dimensional stability • Electrostatic propensity



Specifications are subject to manufacturing tolerances and may be changed without notice. Colour variation may occur between sample and supplied products due to dye lot tolerances.

AIRLAY

WWW.AIRLAY.COM.AU

AIRLAY FLOORCOVERINGS

Head Office: 91-115 Link Drive, Campbellfield VIC 3061

Phone: (03) 9359 4705 **Email:** sales@airlay.com.au