



# PEBBLE COLLECTION

CARPET  
PLANKS

AIRLAY 



# PEBBLE COLLECTION



METAL & MARBLE





MINERAL

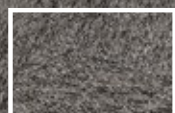






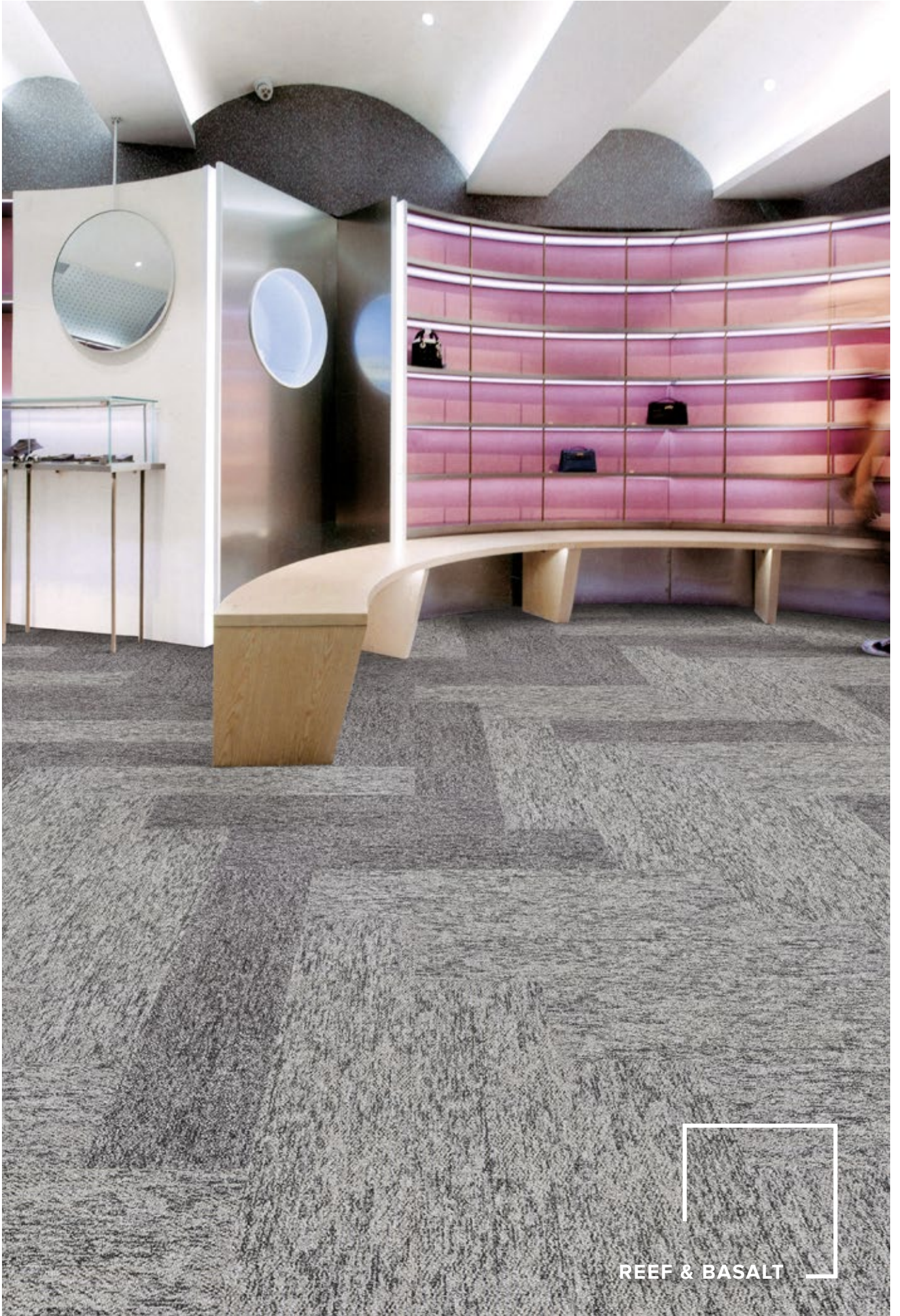






QUARTZ & GRAVEL





REEF & BASALT





**QUARTZ**



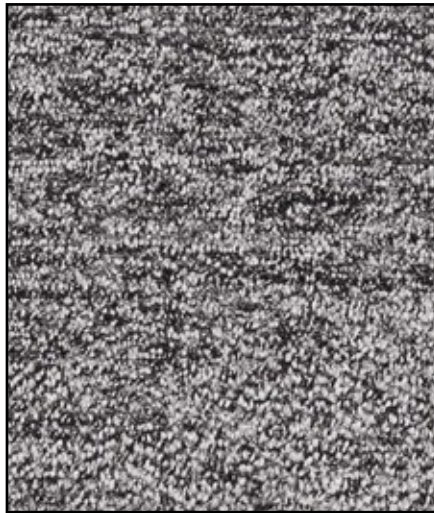
**SAND**



**MINERAL**



**REEF**



**BASALT**



**GRAVEL**



**METAL**



**ROCK**



**MARBLE**



# PEBBLE



## TECHNICAL SPECIFICATIONS

<b>Product Range</b>	Pebble
<b>Product Description</b>	Tufted Multi-Level Loop Carpet Tile Plank
<b>Yarn / Fibre</b>	100% Solution Dyed Nylon
<b>Machine Gauge</b>	1/12th
<b>Pile Height</b>	4.0mm +/-0.5mm
<b>Total Thickness</b>	7.0mm +/-0.5mm
<b>Tile Size</b>	25cm x 100cm
<b>Backing Structure</b>	PVC with Recycled Content
<b>Installation Method</b>	Herringbone, Ashlar, Brick

## SUSTAINABILITY SPECIFICATIONS

<b>Less Waste</b>	Modular carpet creates 85 – 90% less waste than broadloom carpet
<b>Product Stewardship</b>	100% take back & repurpose through accredited partner
<b>Recycled Content</b>	Minimum of 55% recycled content in the backing structure Average of 40% recycled content by weight of product
<b>Accreditation</b>	Carpet & Rug Institute Green Plus (CRI Green Plus) EU CE Accreditation ISO14001:2004 Environment Certification System ISO9001:2008 Quality System Certificate

## PERFORMANCE SPECIFICATIONS

<b>Area of Use</b>	Commercial
<b>Dimensional Stability</b>	Less than 0.2% variation
<b>Biocontaminant Control</b>	Ultra Fresh Anti-microbial treated
<b>Anti-Static</b>	AATCC134 < 3500 Volts
<b>Warranty</b>	To be installed according to Australian Standards AS/NZS 2455.1:2007 and AS/NZS 2455.2:2007. 15 year limited warranty: • Manufacturing defect • Dimensional stability • Electrostatic propensity



Specifications are subject to and may change without notice.  
Colour variation may occur between sample and production due to dye lot tolerances.