



DUSK COLLECTION

CARPET
TILES

AIRLAY 

DUSK COLLECTION

Deliberately dark and moody, the deep tones and textures of the Dusk carpet tile collection make it a versatile and practical solution.

Symbolic of mystery, power, elegance and sophistication, dark flooring is always a timeless option. Performing extremely well in high traffic environments, the flooring will maintain its beauty for years to come.





NIGHTTIDE





MIDNIGHT



BLACKSEA
& NIGHTSKY



TWILIGHT



AFTERDARK



STARLIGHT



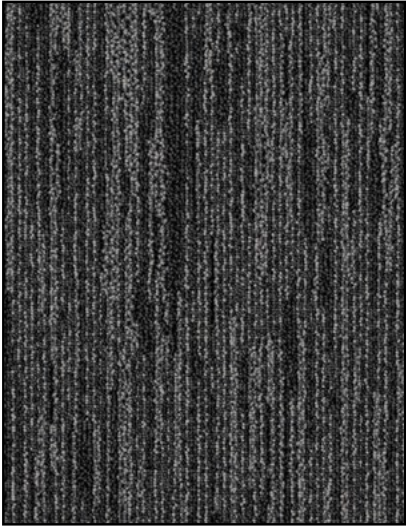

NIGHTSKY



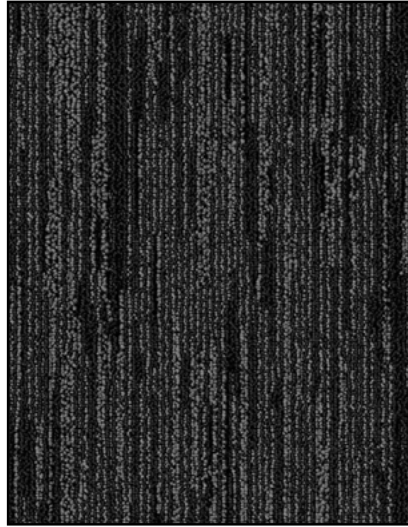
AFTERDARK
& MIDNIGHT



NIGHTTIDE
& MIDNIGHT



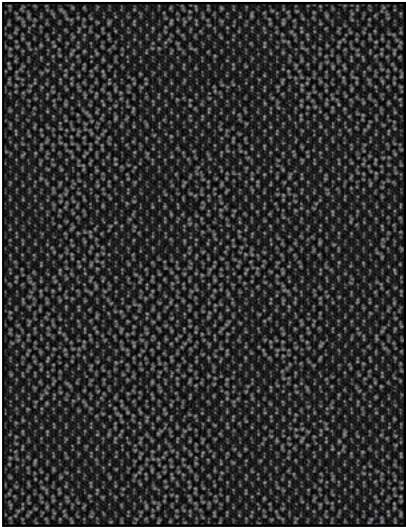
NIGHTTIDE



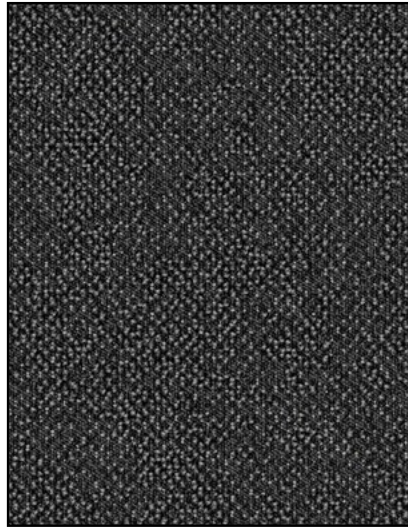
AFTERDARK



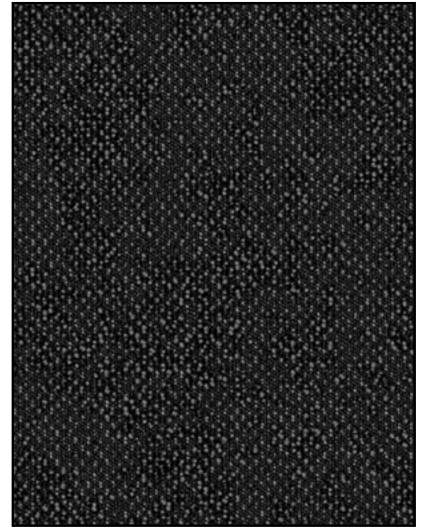
TWILIGHT



MIDNIGHT



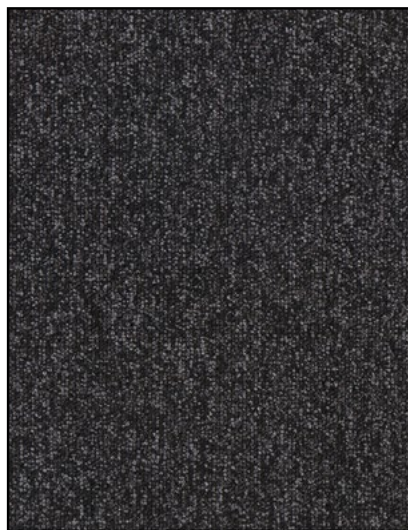
BLACKSEA



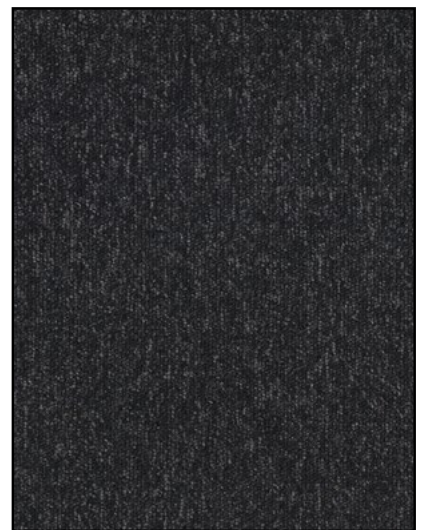
NIGHTSKY



PITCHBLACK



STARLIGHT



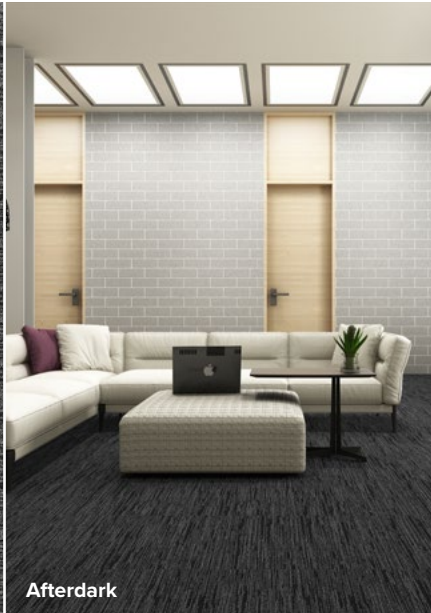
MOONLIGHT



DUSK



Nighttide



Afterdark



Moonlight

TECHNICAL SPECIFICATIONS

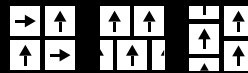
Product Range	Dusk
Product Description	Tufted Carpet Tile
Yarn / Fibre	100% Solution Dyed Nylon
Machine Gauge	1/12th
Pile Height	3.5mm +/-0.5mm
Total Thickness	6.0mm +/-0.5mm
Tile Size	50cm x 50cm
Backing Structure	PVC with Recycled Content
Installation Method	Quarter Turn, Ashlar, Brick

SUSTAINABILITY SPECIFICATIONS

Less Waste	Modular carpet creates 85 – 90% less waste than broadloom carpet
Product Stewardship	100% take back & repurpose through accredited partner
Recycled Content	Minimum of 55% recycled content in the backing structure Average of 40% recycled content by weight of product
Accreditation	Carpet & Rug Institute Green Plus (CRI Green Plus) EU CE Accreditation ISO14001:2004 Environment Certification System ISO9001:2008 Quality System Certificate

PERFORMANCE SPECIFICATIONS

Area of Use	Commercial
Dimensional Stability	Less than 0.2% variation
Biocontaminant Control	Ultra Fresh Anti-microbial treated
Anti-Static	AATCC134 < 3500 Volts
Warranty	To be installed according to Australian Standards AS/NZS 2455.1:2007 and AS/NZS 2455.2:2007. 15 year limited warranty: • Manufacturing defect • Dimensional stability • Electrostatic propensity



Specifications are subject to manufacturing tolerances and may be changed without notice. Colour variation may occur between sample and supplied products due to dye lot tolerances.