



CARPET  
TILES

# ELEGANCE COLLECTION

AIRLAY 

# ELEGANCE COLLECTION

The Elegance carpet tile collection defines simplicity with its neutral palette and refined patterning. Embrace the fusion of elegance and practicality as you seamlessly incorporate the collection into your next project, elevating both aesthetics and performance.

Crafted with meticulous attention to detail, the tile boasts a tight and dense structure, ensuring longevity in high-traffic areas. Made from solution dyed nylon they exhibit remarkable resilience against wear and tear.



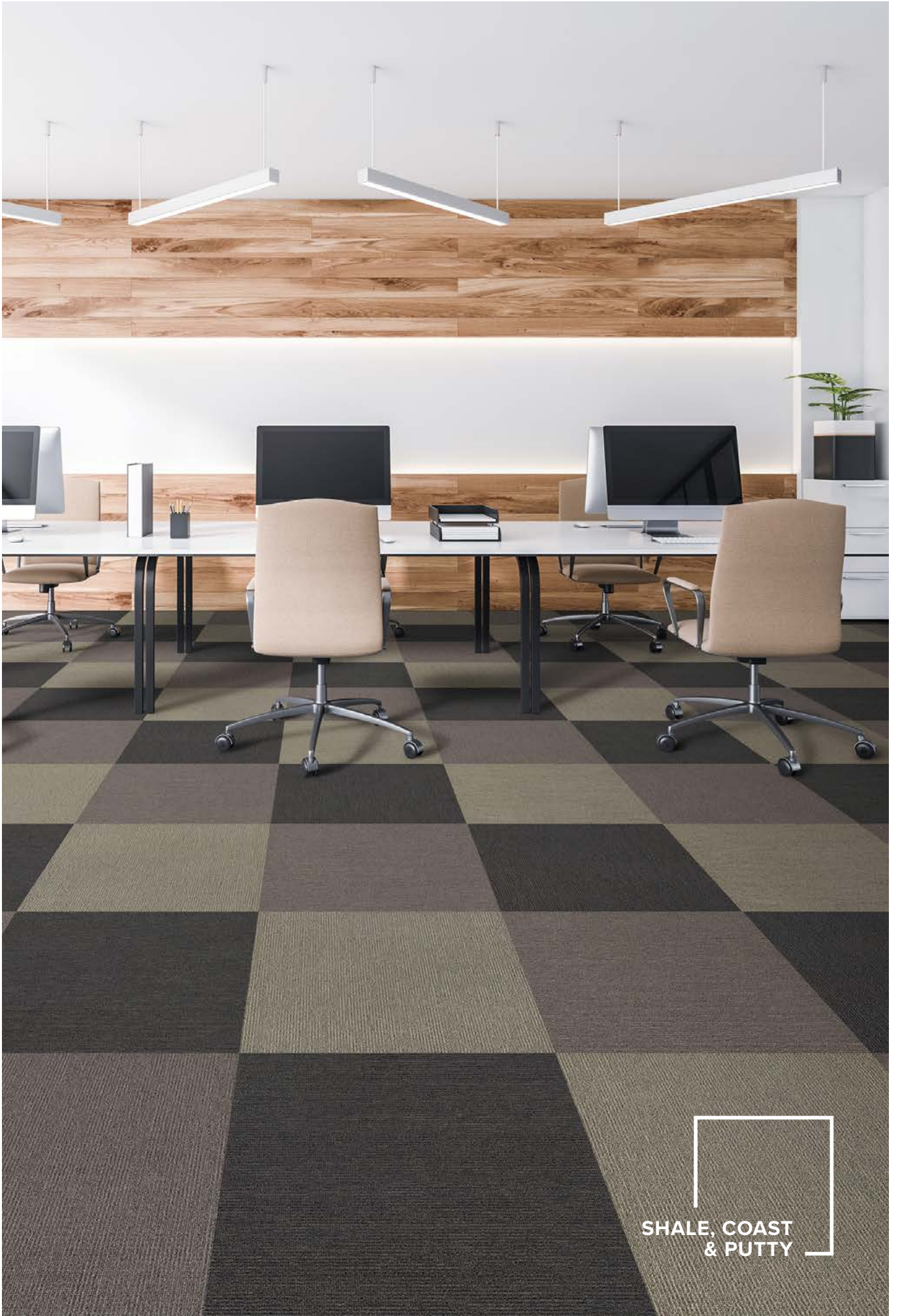






SILVER





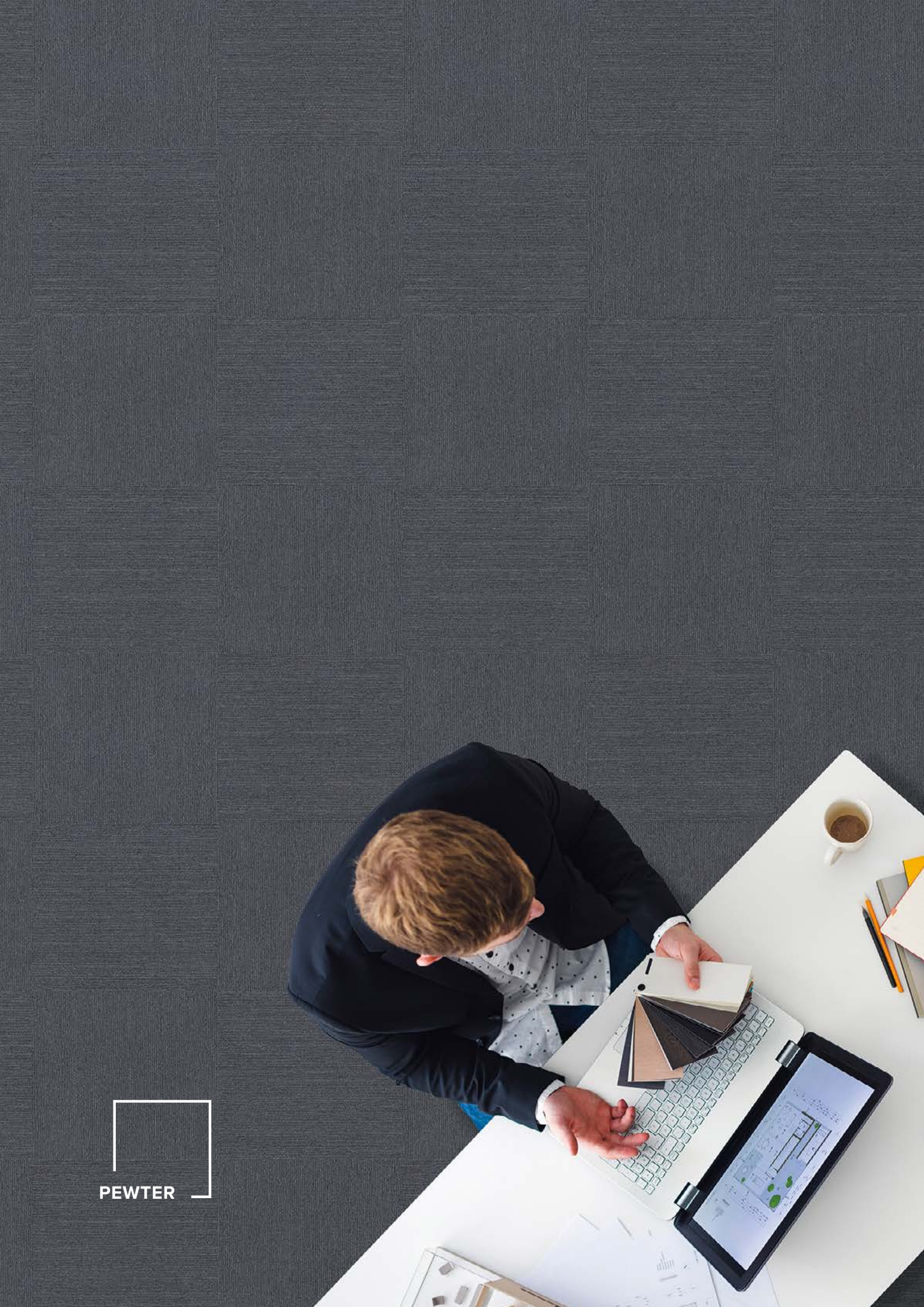
SHALE, COAST  
& PUTTY







TERRAIN &  
BOULDER





BOULDER  
& PUTTY









BOULDER  
& PUTTY



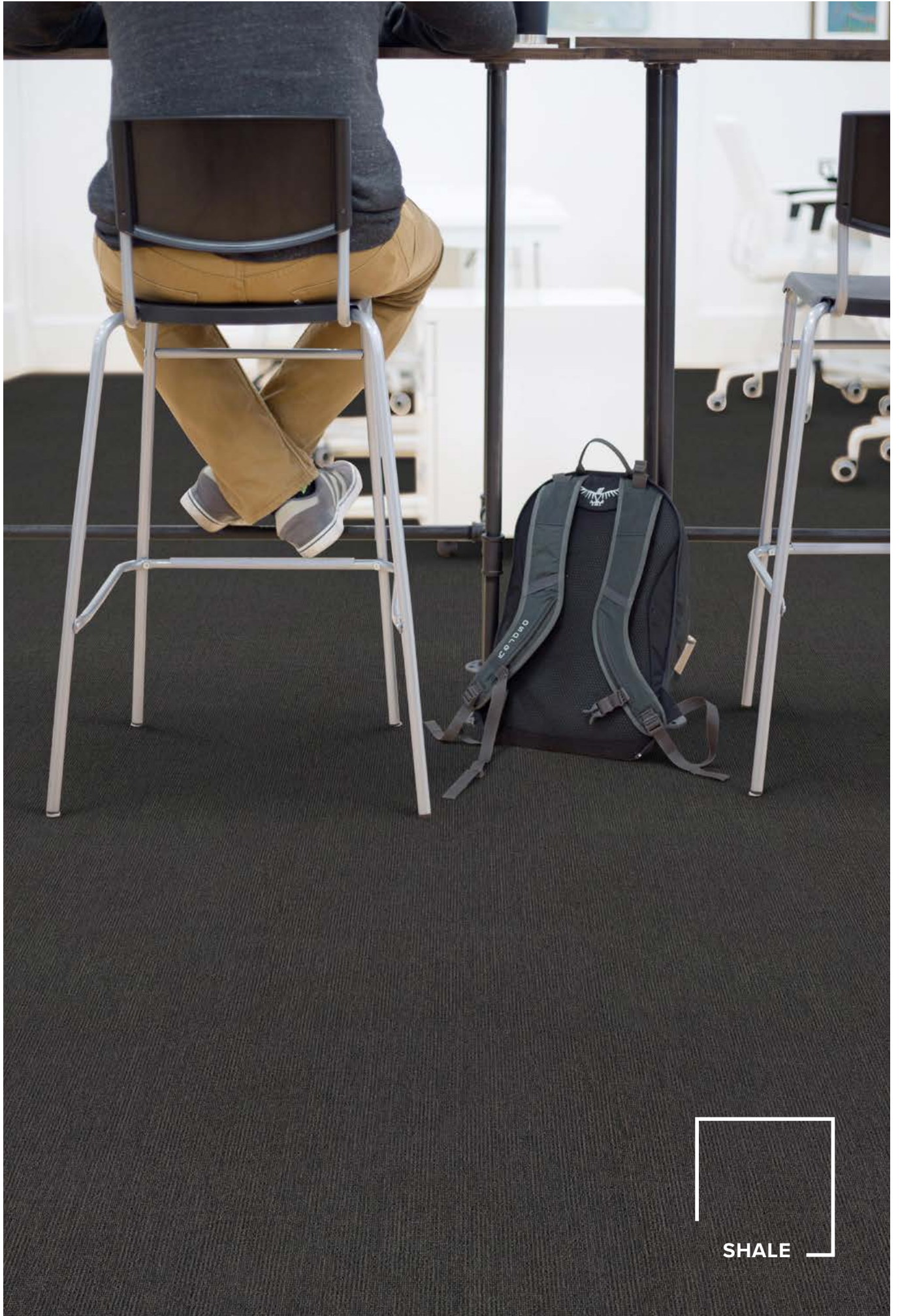




TERRAIN



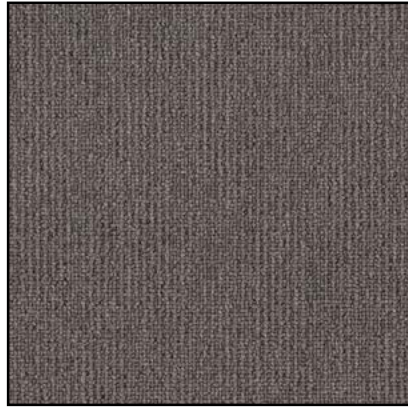
STEEL



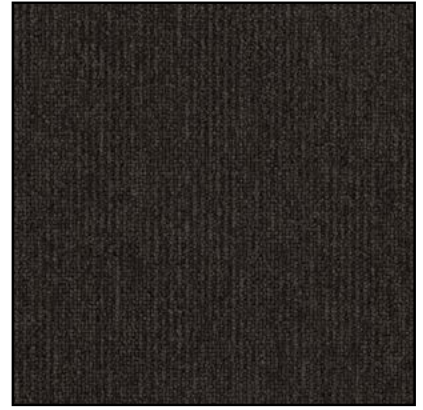
SHALE



**PUTTY**



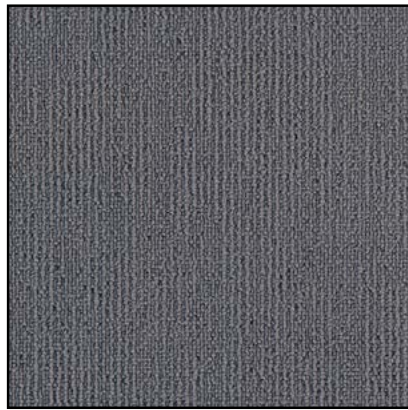
**COAST**



**TERRAIN**



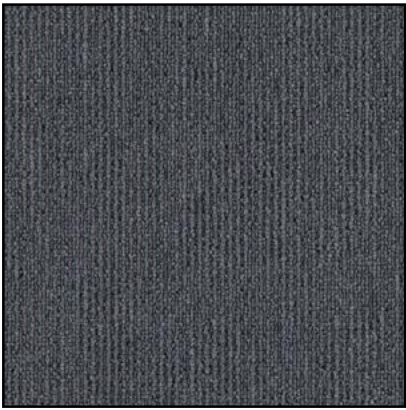
**SHALE**



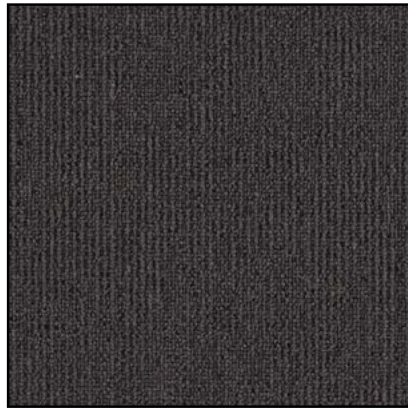
**SILVER**



**STEEL**



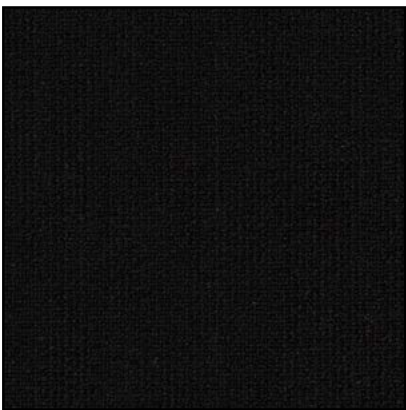
**PEWTER**



**BOULDER**



**MARITIME**



**RAVEN**



# ELEGANCE



Silver & Putty



Shale



Maritime & Pewter

## TECHNICAL SPECIFICATIONS

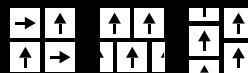
<b>Product Range</b>	Elegance
<b>Product Description</b>	Multi-Level Loop Carpet Tile
<b>Yarn / Fibre</b>	100% Solution Dyed Nylon
<b>Machine Gauge</b>	1/10th
<b>Pile Height</b>	4.0mm +/-0.5mm
<b>Total Thickness</b>	7.0mm +/-0.5mm
<b>Tile Size</b>	50cm x 50cm
<b>Backing Structure</b>	PVC with Recycled Content or Cushion Back
<b>Installation Method</b>	Quarter Turn, Ashlar, Brick

## SUSTAINABILITY SPECIFICATIONS

<b>Less Waste</b>	Modular carpet creates 85 – 90% less waste than broadloom carpet
<b>Product Stewardship</b>	100% take back & repurpose through accredited partner
<b>Recycled Content</b>	Minimum of 55% recycled content in the backing structure  Average of 40% recycled content by weight of product
<b>Accreditation</b>	Carpet & Rug Institute Green Plus (CRI Green Plus) EU CE Accreditation ISO14001:2004 Environment Certification System ISO9001:2008 Quality System Certificate

## PERFORMANCE SPECIFICATIONS

<b>Area of Use</b>	Commercial
<b>Dimensional Stability</b>	Less than 0.2% variation
<b>Biocontaminant Control</b>	Ultra Fresh Anti-microbial treated
<b>Anti-Static</b>	AATCC134 < 3500 Volts
<b>Warranty</b>	To be installed according to Australian Standards AS/NZS 2455.1:2007 and AS/NZS 2455.2:2007.  15 year limited warranty: • Manufacturing defect • Dimensional stability • Electrostatic propensity



Specifications are subject to manufacturing tolerances and may be changed without notice. Colour variation may occur between sample and supplied products due to dye lot tolerances.



## AIRLAY FLOORCOVERINGS

**Head Office:** 91-115 Link Drive, Campbellfield VIC 3061  
**Phone:** (03) 9359 4705 **Email:** sales@airlay.com.au

**AIRLAY.COM.AU**