

# NOVA COLLECTION

CARPET  
TILES

AIRLAY 



# NOVA COLLECTION

Nova showcases a celestial design suited to a vast array of interior projects.

An organic design woven from 100% solution-dyed nylon, Nova's loop pile is as practical as it is beautiful. It is available in a multitude of aesthetically pleasing cosmic colour combinations.







ORBIT










CLUSTER





COMET





PLASMA







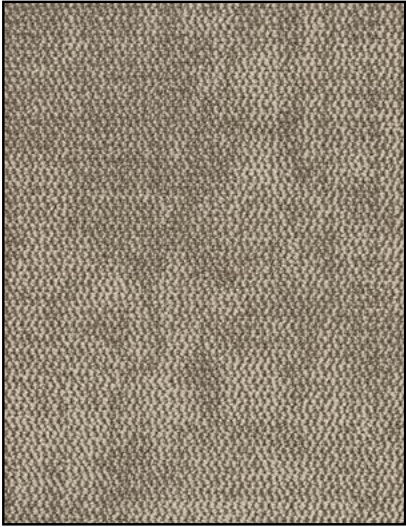


SPACE

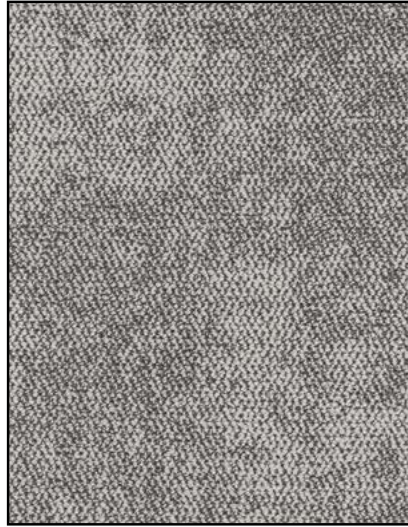




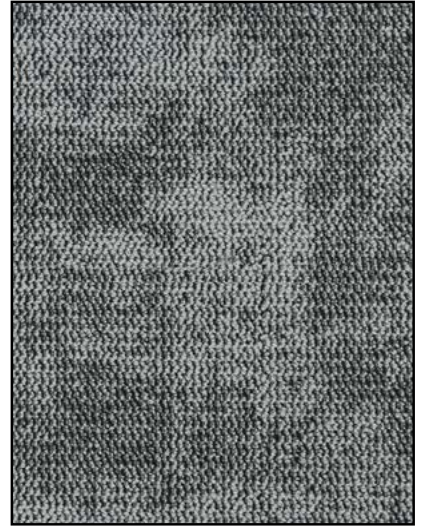




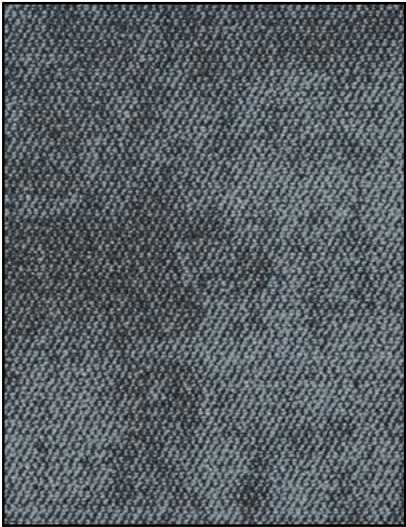
**SCOPE**



**CLUSTER**



**PLASMA**



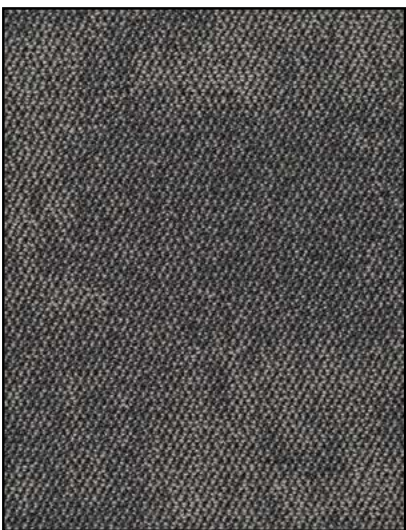
**SPACE**



**MILKY WAY**



**ORBIT**



**COMET**



**MAGNITUDE**

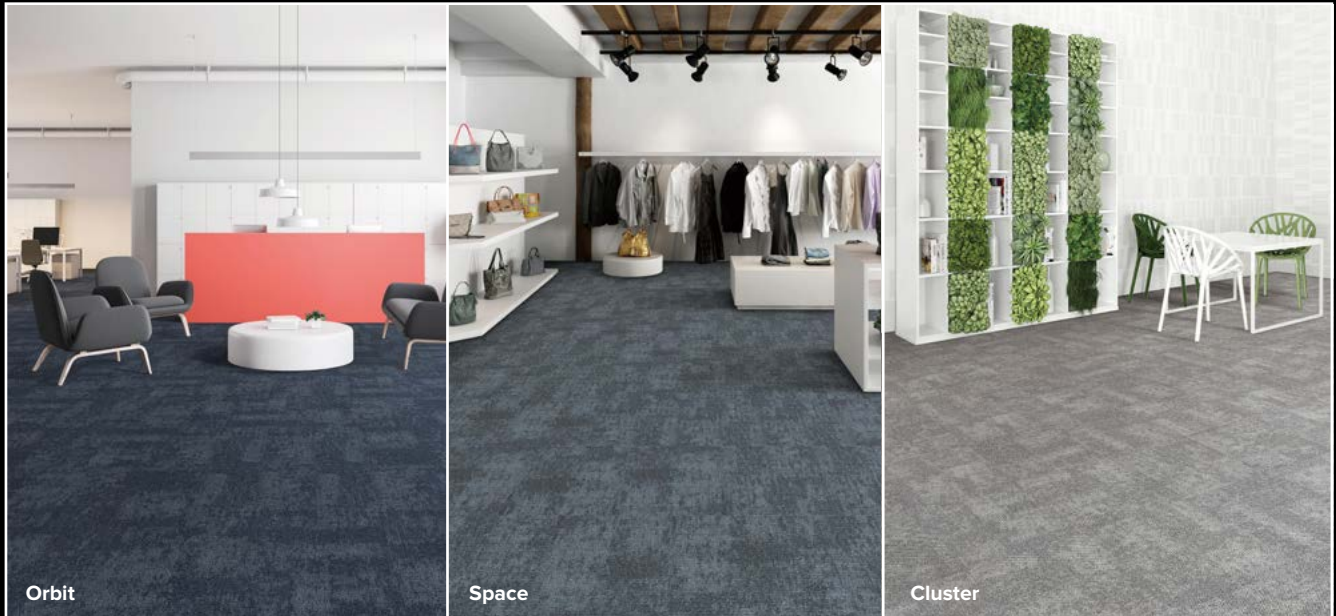


**STAR**





# NOVA



## TECHNICAL SPECIFICATIONS

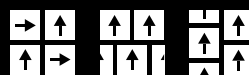
<b>Product Range</b>	Nova
<b>Product Description</b>	Patterned Loop Pile Carpet Tile
<b>Yarn / Fibre</b>	100% Solution Dyed Nylon
<b>Machine Gauge</b>	1/12th
<b>Pile Height</b>	4.0mm +/-0.5mm
<b>Total Thickness</b>	6.0mm +/-0.5mm
<b>Tile Size</b>	50cm x 50cm
<b>Backing Structure</b>	PVC with Recycled Content
<b>Installation Method</b>	Quarter Turn, Ashlar, Brick

## SUSTAINABILITY SPECIFICATIONS

<b>Less Waste</b>	Modular carpet creates 85 – 90% less waste than broadloom carpet
<b>Product Stewardship</b>	100% take back & repurpose through accredited partner
<b>Recycled Content</b>	Minimum of 55% recycled content in the backing structure Average of 40% recycled content by weight of product
<b>Accreditation</b>	Carpet Institute of Australia ECS4 Carpet & Rug Institute Green Plus (CRI Green Plus) EU CE Accreditation ISO14001:2004 Environment Certification System ISO9001:2008 Quality System Certificate

## PERFORMANCE SPECIFICATIONS

<b>Area of Use</b>	Commercial
<b>Dimensional Stability</b>	Less than 0.2% variation
<b>Biocontaminant Control</b>	Ultra Fresh Anti-microbial treated
<b>Anti-Static</b>	AATCC134 < 3500 Volts
<b>Warranty</b>	To be installed according to Australian Standards AS/NZS 2455:1:2007 and AS/NZS 2455.2:2007. 15 year limited warranty: • Manufacturing defect • Dimensional stability • Electrostatic propensity



Specifications are subject to manufacturing tolerances and may be changed without notice. Colour variation may occur between sample and supplied products due to dye lot tolerances.