



SHEET
VINYL

SUPERSAFE COLLECTION

SAFETY FLOORING

AIRLAY 
floorcoverings

SUPERSAFE COLLECTION

SuperSafe is a homogeneous vinyl sheet floor with a broad color palette that offers extreme durability and superior wear. Supersafe is available with a R10, R11 and R12 Slip Resistance Rating which meets all safety and health requirements and comply with the BCA and all slip-resistant standards.

Suitable for commercial applications such as healthcare, education, office, retail and hospitality, Supersafe is hard wearing, easy to maintain and keep clean and comfortable under foot.



FOG GREY
CHIP



FOG GREY
PLAIN



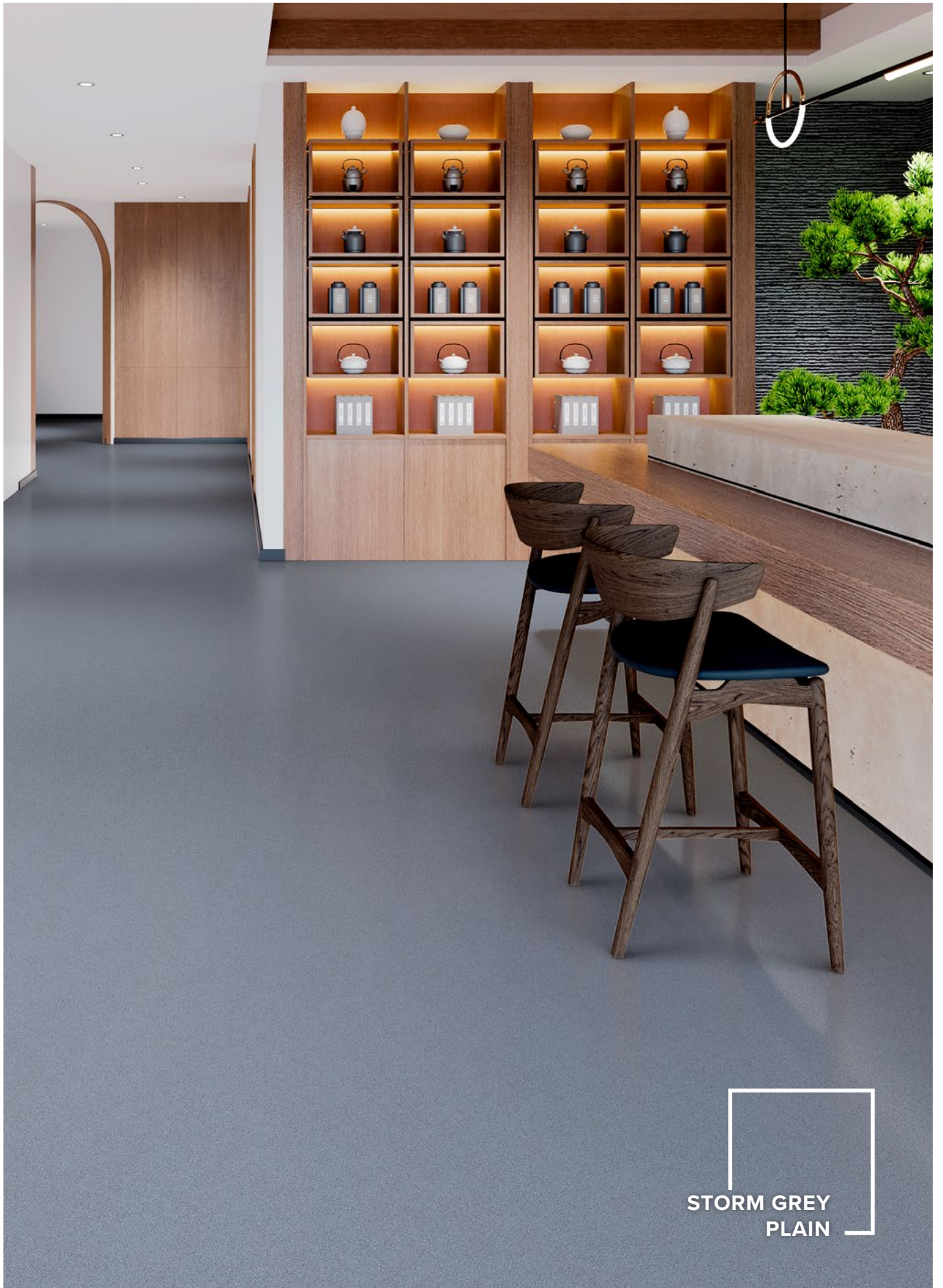
JET BLACK
CHIP



JET BLACK
PLAIN



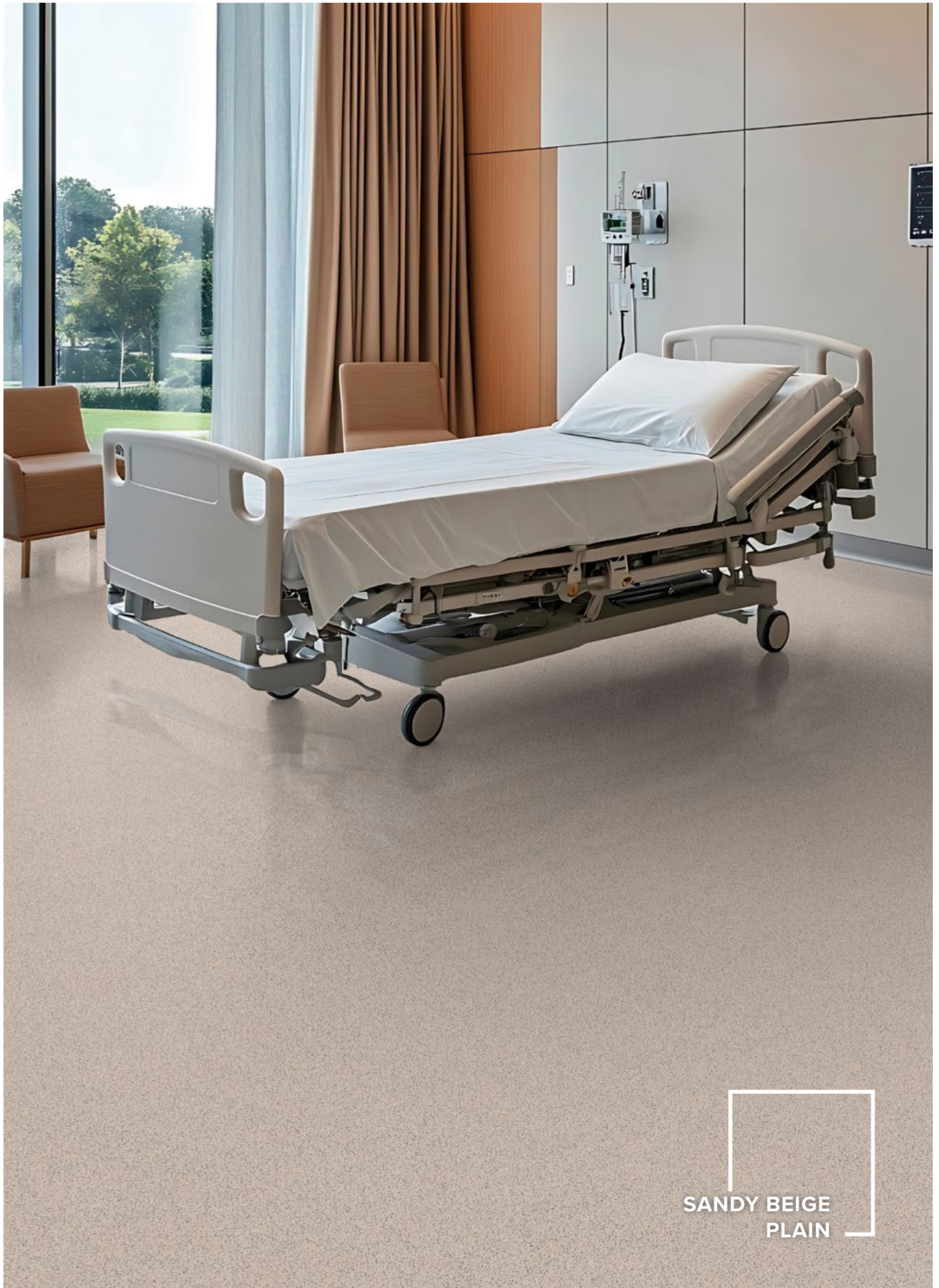
STORM GREY
CHIP



STORM GREY
PLAIN



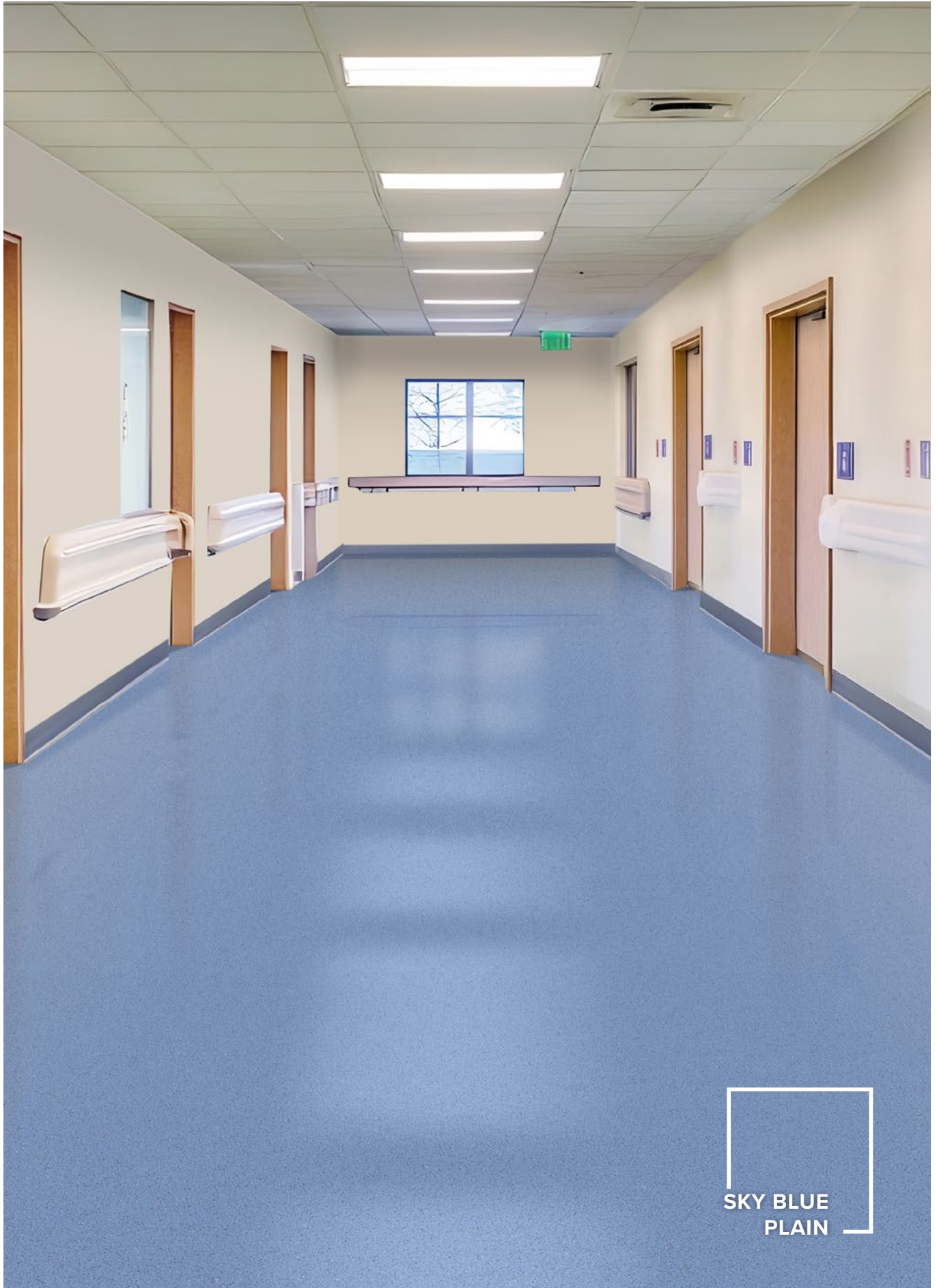
SANDY BEIGE
CHIP



SANDY BEIGE
PLAIN



SKY BLUE
CHIP



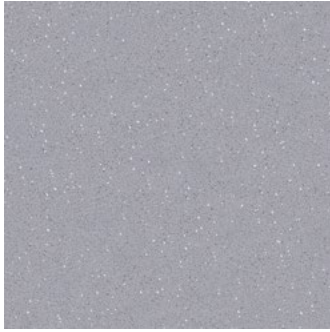
SKY BLUE
PLAIN



STONE TAUPE
CHIP



STONE TAUPE
PLAIN



FOG GREY CHIP



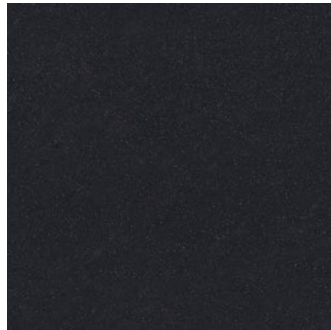
JET BLACK CHIP



SANDY BEIGE CHIP



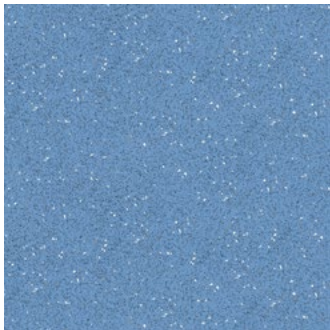
FOG GREY PLAIN



JET BLACK PLAIN



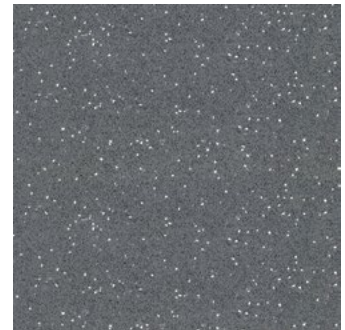
SANDY BEIGE PLAIN



SKY BLUE CHIP



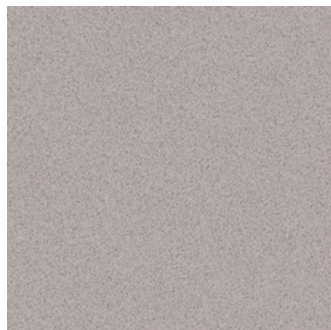
STONE TAUPE CHIP



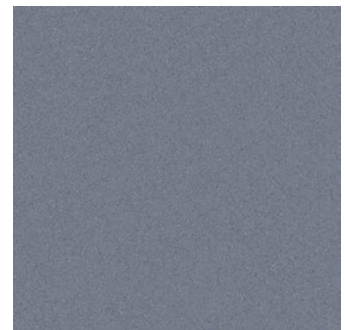
STORM GREY CHIP



SKY BLUE PLAIN



STONE TAUPE PLAIN



STORM GREY PLAIN



SUPERSAFE

TECHNICAL SPECIFICATIONS

| TECHNICAL DATA | | SUPERSAFE R10 | SUPERSAFE R11 | SUPERSAFE R12 |
|---------------------------|---|---|---|---|
| Flooring Type | EN 13845 | Safety Flooring | Safety Flooring | Safety Flooring |
| Warranty* | Commercial | 15 years | 15 years | 15 years |
| Roll Dimensions | EN ISO 24341 | 2.0m x 20m | 2.0m x 20m | 2.0m x 20m |
| Overall Thickness | EN ISO 24346 | 2.0mm | 2.0mm | 2.0mm |
| Total Weight | EN ISO 23997 | 2.5kg/m ² | 2.6kg/m ² | 2.8kg/m ² |
| Classification (use area) | EN ISO 10874 | Commercial: 34 (Very Heavy) Light Industrial: 43 (Heavy) | Commercial: 34 (Very Heavy) Light Industrial: 43 (Heavy) | Commercial: 34 (Very Heavy) Light Industrial: 43 (Heavy) |
| Residual Indentation | EN ISO 24343 - 1 | ≤0.10 mm | ≤0.10 mm | ≤0.10 mm |
| Wear Resistance | EN 13845 | ≤10% particles lost over 50,000 cycles | ≤10% particles lost over 50,000 cycles | ≤10% particles lost over 50,000 cycles |
| Slip Resistance | EN 13845 AS 4586 A AS 4586 C AS 4586 D | ESb & Esf P3 -- R10 | ESb & Esf P4 -- R11 | ESb & Esf P5 -- R12 |
| Flexibility | EN ISO 24344 Method A | Pass | Pass | Pass |
| Dimensional Stability | EN ISO 23999 | ≤0.4% | ≤0.4% | ≤0.4% |
| Chemical Resistance | EN ISO 26987 | Good | Good | Good |
| Colour Fastness | EN ISO 105-B02 Method 3 | ≥6 | ≥6 | ≥6 |
| Reaction to Fire | EN ISO 9239-1 EN 13501-1 EN ISO 11925-2 | ≥4.5kW/m ² Class Bfl-s1 Pass | ≥4.5kW/m ² Class Bfl-s1 Pass | ≥4.5kW/m ² Class Bfl-s1 Pass |
| Electrical Behaviour | EN 1815 | ≤2kV | ≤2kV | ≤2kV |
| Castor Chair | EN ISO 4918 | Pass | Pass | Pass |
| Seam Strength | EN ISO 16906 | Pass | Pass | Pass |
| Thermal Conductivity | EN 10456 | 0.25 W/m.K | 0.25 W/m.K | 0.25 W/m.K |
| TVOC Emissions | EN 16516 | Approved | Approved | Approved |
| CE Marking | EN 14041:2004 | Yes | Yes | Yes |

Specifications are subject to manufacturing tolerances and may be changed without notice. Colour variation may occur between sample and supplied products due to dye lot tolerances.

*Warranty

The flooring has a 15 year limited warranty for latent manufacturing defects.

The above warranty is subject to the products being specified, installed and maintained in accordance with our recommendations (instructions available on request)



AIRLAY
floorcoverings

AIRLAY FLOORCOVERINGS

Head Office: 91-115 Link Drive, Campbellfield VIC 3061

Phone: (03) 9359 4705 Email: sales@airlay.com.au

AIRLAY.COM.AU